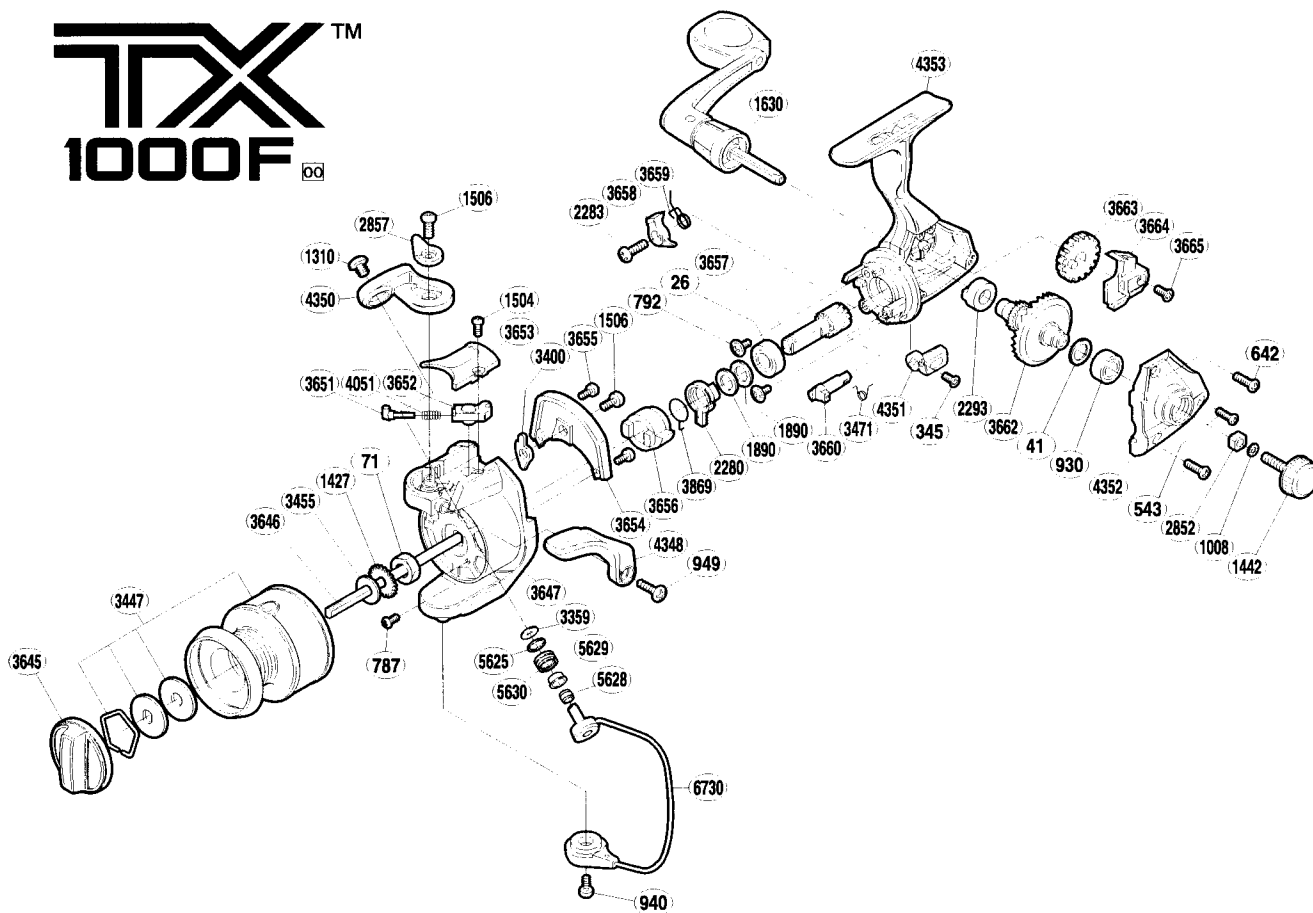


TX™ 1000F



Part No. Description

- RD 0026 Ball Bearing
- RD 0041 Drive Gear Washer
- RD 0071 Rotor Nut
- RD 0345 Anti-Reverse Lever Screw
- RD 0543 Side Cover Screw (black)
- RD 0642 Side Cover Screw (silver)
- RD 0787 Nut Lock Screw
- RD 0792 Bearing Retainer Screw
- RD 0930 Ball Bearing
- RD 0940 Bail Hold Support Screw
- RD 0949 Trigger Screw
- RD 1008 Handle Lock Washer
- RD 1310 Line Roller Screw
- RD 1427 Spool Support
- RD 1442 Handle Screw Cap
- RD 1504 Bail Spring Cover Screw
- RD 1506 Multi-Purpose Screw
- RD 1630 Handle Assembly
- RD 1890 Bushing Washer
- RD 2280 Anti-Reverse Lock Out

Part No. Description

- RD 2283 Anti-Reverse Pawl Screw
- RD 2293 Drive Gear Bushing
- RD 2852 Handle Screw Lock
- RD 2857 Trigger Cam
- RD 3359 Line Roller Washer
- RD 3400 Bail Trip Lever
- RD 3447 Spool Assembly
- RD 3455 Spool Washer
- RD 3471 Anti-Reverse Cam Spring
- RD 3645 Drag Knob
- RD 3646 Main Shaft
- RD 3647 Rotor
- RD 3651 Bail Spring Guide (A)
- RD 3652 Bail Spring Guide (B)
- RD 3653 Bail Spring Cover
- RD 3654 Counterbalance Cover
- RD 3655 Cover Screw
- RD 3656 Anti-Reverse Ratchet
- RD 3657 Pinion Gear
- RD 3658 Anti-Reverse Pawl

Part No. Description

- RD 3659 Anti-Reverse Pawl Spring
- RD 3660 Anti-Reverse Cam
- RD 3662 Drive Gear
- RD 3663 Oscillating Gear
- RD 3664 Oscillating Slider
- RD 3665 Slider Retainer Screw
- RD 3869 Anti-Reverse Lock Out Spring
- RD 4051 Bail Spring
- RD 4348 Quick-Fire II Trigger
- RD 4350 Bail Arm
- RD 4351 Anti-Reverse Lever
- RD 4352 Side Cover
- RD 4353 Body
- RD 5625 Line Roller Spacer
- RD 5628 Line Roller Collar
- RD 5629 Line Roller Bushing
- RD 5630 Line Roller
- RD 6730 Bail Assembly