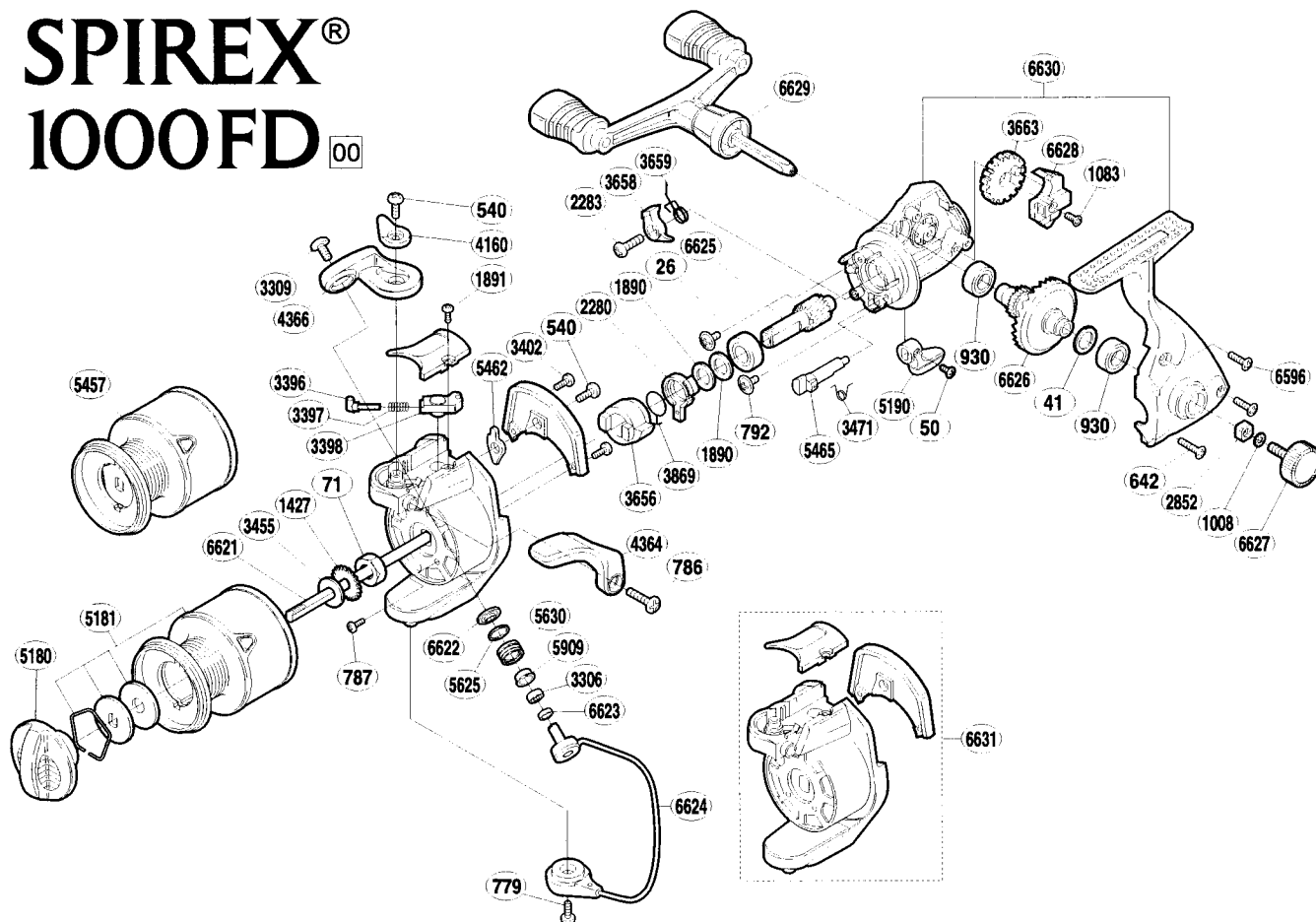


## SPIREX® 1000FD 00



Part No.	Description	Part No.	Description	Part No.	Description
RD 0026	Ball Bearing	RD 3306	Line Roller Bearing	RD 5457	Spool Assembly (graphite)
RD 0041	Drive Gear Washer	RD 3309	Line Roller Screw	RD 5462	Bail Trip Lever
RD 0050	Anti-Reverse Lever Screw	RD 3396	Bail Spring Guide (A)	RD 5465	Anti-Reverse Cam
RD 0071	Rotor Nut	RD 3397	Bail Spring	RD 5625	Line Roller Spacer
RD 0540	Multi-Purpose Screw	RD 3398	Bail Spring Guide (B)	RD 5630	Line Roller
RD 0642	Side Cover Screw (long)	RD 3402	Cover Screw	RD 5909	Line Roller Bushing
RD 0779	Bail Hold Support Screw	RD 3455	Spool Washer	RD 6596	Side Cover Screw (short)
RD 0786	Trigger Screw	RD 3471	Anti-Reverse Cam Spring	RD 6621	Main Shaft
RD 0787	Nut Lock Screw	RD 3656	Anti-Reverse Ratchet	RD 6622	Line Roller Washer
RD 0792	Bearing Retainer Screw	RD 3658	Anti-Reverse Pawl	RD 6623	Bearing Spacer
RD 0930	Ball Bearing	RD 3659	Anti-Reverse Pawl Spring	RD 6624	Bail Assembly
RD 1008	Handle Lock Washer	RD 3663	Oscillating Gear	RD 6625	Pinion Gear
RD 1083	Slider Retainer Screw	RD 3869	Anti-Reverse Lock Out Spring	RD 6626	Drive Gear
RD 1427	Spool Support	RD 4160	Trigger Cam	RD 6627	Handle Screw Cap
RD 1890	Bushing Washer	RD 4364	Quick-Fire II Trigger	RD 6628	Oscillating Slider
RD 1891	Bail Spring Cover Screw	RD 4366	Bail Arm	RD 6629	Double Paddle Handle Assembly
RD 2280	Anti-Reverse Lock Out	RD 5180	Drag Knob	RD 6630	Body Assembly
RD 2283	Anti-Reverse Pawl Screw	RD 5181	Spool Assembly (aluminum)	RD 6631	Rotor Assembly
RD 2852	Handle Screw Lock	RD 5190	Anti-Reverse Lever		