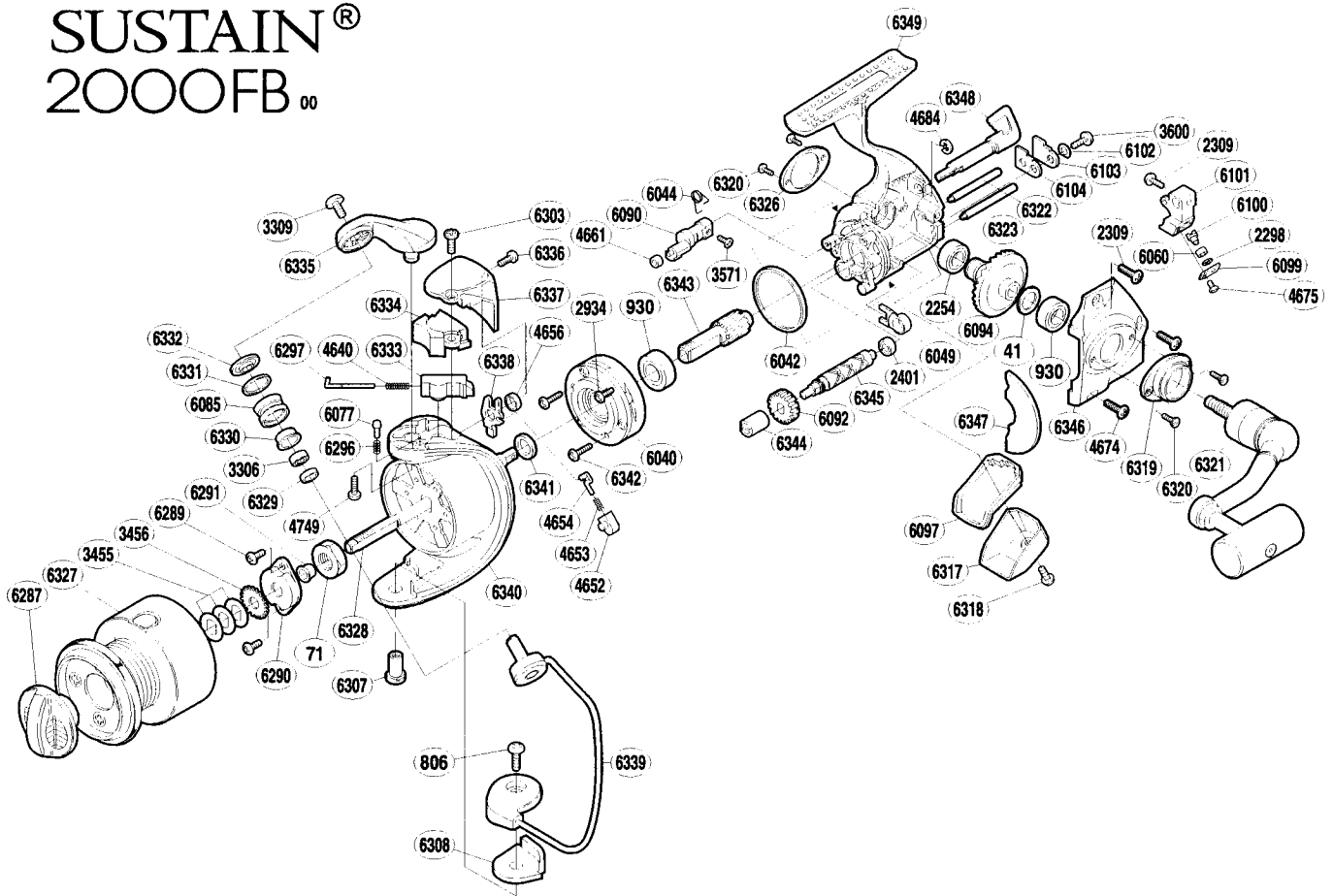


## SUSTAIN® 2000FB 00



Part No.	Description	Part No.	Description	Part No.	Description
RD 0041	Drive Gear Washer	RD 6049	Bushing	RD 6322	Oscillating Guide (A)
RD 0071	Rotor Nut	RD 6060	Oscillating Slider Bushing	RD 6323	Oscillating Guide (B)
RD 0806	Bail Hold Support Screw	RD 6077	Click Pin	RD 6326	Handle Screw Cap (B)
RD 0930	Ball Bearing	RD 6085	Line Roller	RD 6327	Spool Assembly
RD 2254	Ball Bearing	RD 6090	Anti-Reverse Cam	RD 6328	Main Shaft
RD 2298	Spacer	RD 6092	Idle Gear	RD 6329	Bearing Spacer
RD 2309	Multi-Purpose Screw	RD 6094	Drive Gear	RD 6330	Line Roller Bushing
RD 2401	Ball Bearing	RD 6097	Rear Shield	RD 6331	Line Roller Spacer
RD 2934	Clutch Cover Screw	RD 6099	Oscillating Pawl Cover	RD 6332	Line Roller Washer
RD 3306	Ball Bearing	RD 6100	Oscillating Pawl	RD 6333	Bail Spring Guide (B)
RD 3309	Line Roller Screw	RD 6101	Oscillating Slider	RD 6334	Bail Spring Cover
RD 3455	Spool Washer	RD 6102	Worm Shaft Retainer Spacer	RD 6335	Bail Arm
RD 3456	Spool Support	RD 6103	Worm Shaft Retainer	RD 6336	Protector Screw (B)
RD 3571	Anti-Reverse Cam Screw	RD 6104	Worm Shaft Retainer Washer	RD 6337	Rotor Protector
RD 3600	Worm Shaft Retainer Screw	RD 6287	Drag Knob	RD 6338	Bail Trip Lever
RD 4640	Bail Spring	RD 6289	Nut Lock Screw	RD 6339	Bail Assembly
RD 4652	Lever Spring Guide (B)	RD 6290	Rotor Nut Lock Plate	RD 6340	Rotor
RD 4653	Lever Spring	RD 6291	Main Shaft Spacer	RD 6341	Rotor Spacer
RD 4654	Lever Spring Guide (A)	RD 6296	Click Spring	RD 6342	Roller Clutch Screw
RD 4656	Trip Lever Spacer	RD 6297	Bail Spring Guide (A)	RD 6343	Pinion Gear
RD 4661	Anti-Reverse Cam Ring	RD 6303	Protector Screw (A)	RD 6344	Worm Bushing
RD 4674	Side Cover Screw	RD 6307	Bail Hold Support Shaft	RD 6345	Worm Shaft
RD 4675	Oscillating Pawl Cover Screw	RD 6308	Bail Hold Support Spacer	RD 6346	Side Cover
RD 4684	IEI Lock	RD 6317	Rear Protector	RD 6347	Side Cover Flange
RD 4749	Bail Arm Screw	RD 6318	Rear Protector Screw	RD 6348	Anti-Reverse Lever
RD 6040	Roller Clutch Assembly	RD 6319	Handle Screw Cap (A)	RD 6349	Body
RD 6042	Friction Ring	RD 6320	Cap Screw		
RD 6044	Anti-Reverse Cam Spring	RD 6321	Handle Assembly		