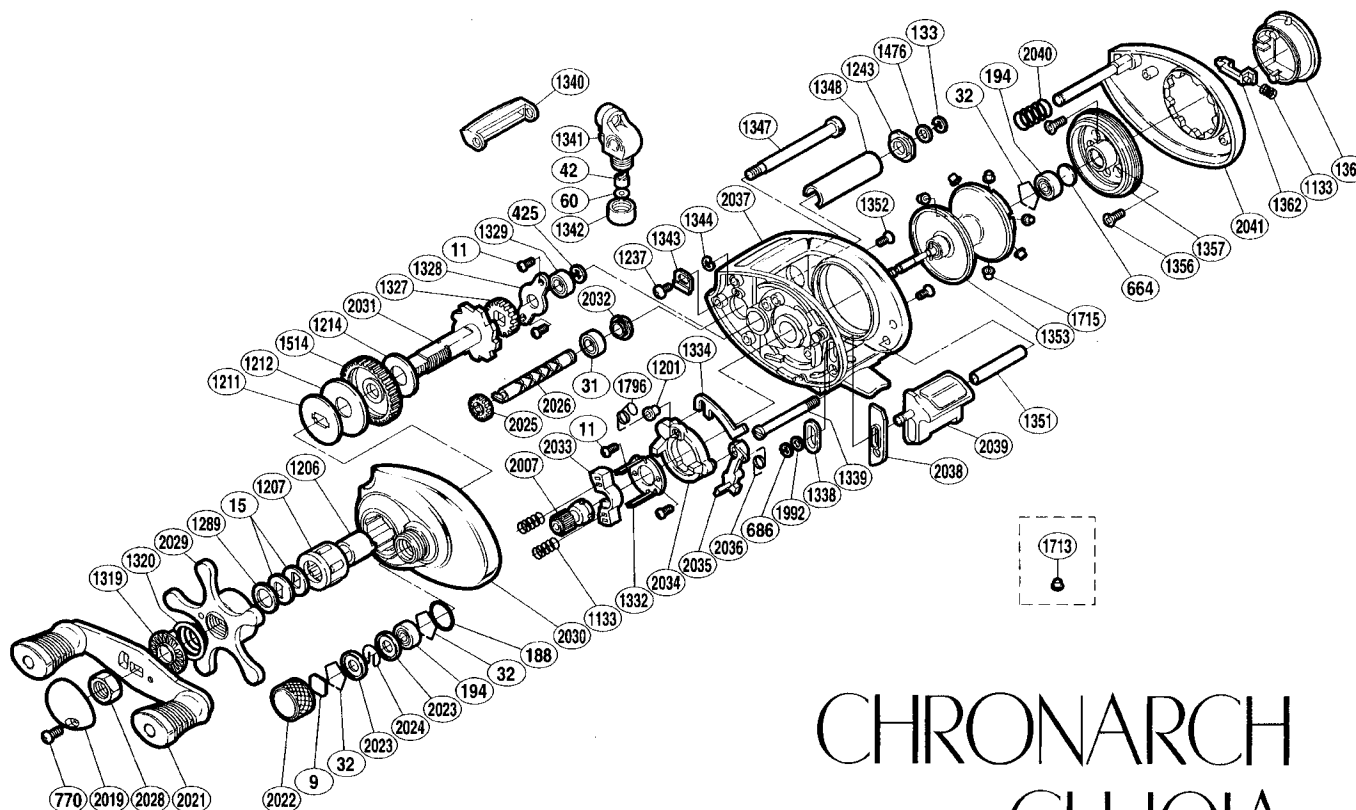


SHIMANO

1999 Repair Supplement



CHRONARCH CH-101A 98

98' CH101A

Part #	Description	Description	Part #	Description
BNT0009	Cast Control Spacer	Idle Gear	BNT2007	Pinion Gear
BNT0011	Multi-Purpose Screw	Drive Shaft Retainer	BNT2019	Handle Nut Plate Assembly
BNT0015	Drag Spring Washer	Ball Bearing	BNT2021	Handle Assembly
BNT0031	Ball Bearing	Clutch Cam Retainer	BNT2022	Cast Control Cap
BNT0032	Bearing Retainer	Clutch Plate	BNT2023	Spool Shaft Clip Holder
BNT0042	Line Guide Pawl	Clutch Bar Guide (A)	BNT2024	Spool Shaft Clip
BNT0060	Spacer (optional)	Clutch Bar Bolt	BNT2025	Idle Gear (C)
BNT0133	Worm Shaft Retainer	Level Wind Protector	BNT2026	Worm Shaft
BNT0188	"O" Ring	Line Guide	BNT2028	Handle Nut
BNT0194	Ball Bearing	Pawl Cap	BNT2029	Star Drag
BNT0425	"E" Lock	Worm Bearing (A) Retainer	BNT2030	Left Side Plate
BNT0664	Spacer (B)	"C" Lock	BNT2031	Drive Shaft
BNT0686	"E" Lock	Level Wind Guide	BNT2032	Worm Bushing (A)
BNT0770	Handle Nut Plate Screw	Level Wind Guard	BNT2033	Yoke
BNT1133	Yoke/Turnkey Pawl Spring	Clutch Bar Support	BNT2034	Clutch Cam
BNT1201	Retractor Spring Collar	Left Side Plate Screw	BNT2035	Clutch Pawl
BNT1206	Roller Clutch Inner Tube	Spool Assembly	BNT2036	Clutch Pawl Spring
BNT1207	Roller Clutch Bearing	Brake Case Retainer Screw	BNT2037	One-Piece Frame
BNT1211	Key Washer	Brake Case	BNT2038	Clutch Bar Guide (B)
BNT1212	Drag Washer (C)	Turnkey Pawl	BNT2039	Quick-Fire II Clutch Bar
BNT1214	Drag Washer (A)	Turnkey Dial	BNT2040	Right Side Plate Spring
BNT1237	Worm Bearing (A) Retainer Screw	Worm Shaft Spacer	BNT2041	Right Side Plate
BNT1243	Worm Bushing (B)	Drive Gear		
BNT1289	Star Drag Spacer	Brake Collar (Red)		
BNT1319	Click Gear	Retractor Spring		
BNT1320	Star Drag Spring	Spacer (B)	BNT1713	Brake Collar (green)