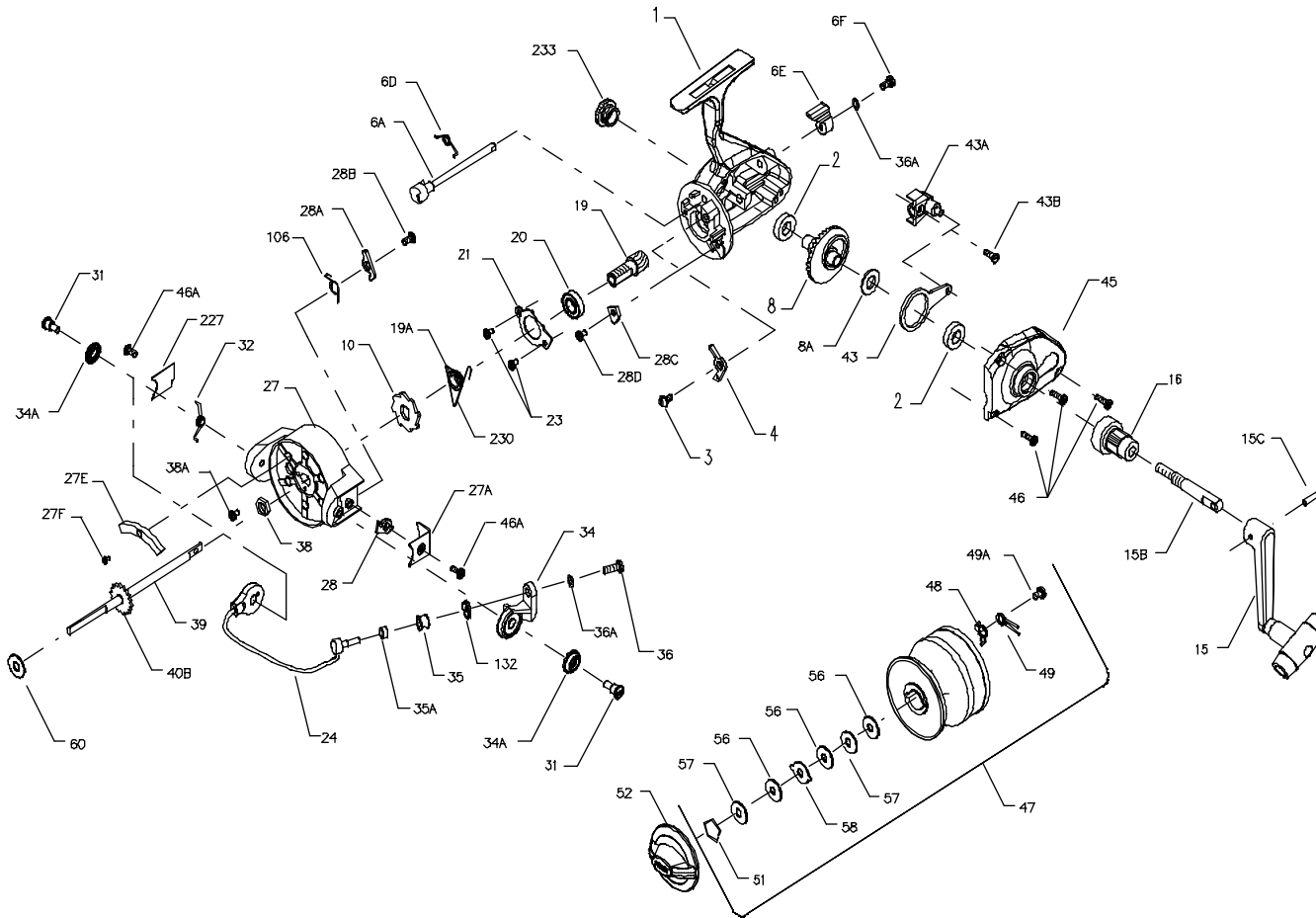




PARTS LIST FOR MODEL 105CS



| KEY NO. | PART NO. | DESCRIPTION |
|---------|-----------|--------------------------------|
| 1 | 001 105C | Housing w/Bushing & Emblem |
| 2 | 002 105 | Housing Bushing (2 req.) |
| 3 | 003 105C | Dog Mounting Screw |
| 4 | 004 105C | Dog |
| 6A | 006A104CS | Eccentric |
| 6D | 006D105 | Eccentric Spring |
| 6E | 006E105 | Eccentric Lever |
| 6F | 006F101 | Eccentric Lever Mounting Screw |
| 8 | 008 105C | Main Gear Assembly |
| 8A | 008A105 | Main Gear Shim |
| 10 | 010 105C | Anti-Reverse Ratchet |
| 15 | 015 105 | Handle |
| 15B | 015B105 | Handle Shaft |
| 15C | 015C105 | Handle Pivot Pin |
| 16 | 016 105 | Handle Collar |
| 19 | 019 105C | Pinion Gear |
| 19A | 019A105C | Pinion Gear Spacer |
| 20 | 020 105 | Ball Bearing |
| 21 | 021 105C | Bearing Cover |
| 23 | 023 103 | Bearing Cover Screw (2 req.) |
| 24 | 024 105CS | Bail Wire |
| 27 | 027 105CS | Rotor Cup |
| 27A | 027A105C | Rotor End Cover |
| 27E | 027E105CS | Balance Weight |
| 27F | 027F105CS | Balance Weight Screw |
| 28 | 028 105C | Trip Lever |
| 28A | 028A105C | Cam Lever |
| 28B | 028B103 | Cam Lever Mounting Screw |
| 28C | 028C105C | Trip Cam |
| 28D | 046A103 | Cam Mount Screw |
| 31 | 031 103 | Bail Arm Screw (2 req.) |
| 32 | 032 105C | Bail Spring |
| 34 | 034 105CS | Bail Arm |
| 34A | 034A103 | Bail Arm Spacer |
| 35 | 035 103CS | Line Roller |
| 35A | 035A103CS | Line Roller Bushing |
| 36 | 036 101 | Bail Stud Screw |
| 36A | 036A103 | Lock Washer (2 req.) |
| 38 | 038 105 | Rotor Nut |
| 38A | 038A103CS | Rotor Nut Screw |
| 39 | 039 105C | Crosswind Shaft |
| 40B | 040B105C | Click Ratchet |
| 43 | 043 105C | Crosswind Arm |
| 43A | 043A105C | Crosswind Block |
| 43B | 043B105 | Crosswind Arm Screw |
| 45 | 045 105CS | Housing Cover w/Bushing |
| 46 | 046 103 | Housing Cover Screw (4 req.) |
| 46A | 046A103 | Rotor End Cover Screw (2 req.) |
| 47 | 047 105CS | Spool (Complete) |
| 48 | 048 103CS | Click Tongue |
| 49 | 049 103CS | Click Spring |
| 49A | 022 103CS | Click Spring Screw |
| 51 | 051 105 | Retaining Ring |
| 52 | 052 105CS | Drag Knob |
| 56 | 056T105CS | Drag Washer (Teflon) (3 req.) |
| 57 | 057 105 | Drag Washer (Keyed) (2 req.) |
| 58 | 058 105 | Drag Washer (Ear) |
| 60 | 060 103 | Thrust Washer (Teflon) |
| 106 | 106 105C | Cam Lever Spring |
| 132 | 132 103CS | Roller Washer |
| 227 | 227 105C | Bail Spring Cover |
| 230 | 230 105C | Silent Dog Spring |
| 233 | 233 105 | Housing Handle Cap |